

# Indoor

---

Collection



**Cane-line**®



# A contemporary interpretation with timeless and sustainable designs

Welcome to the new Cane-line Indoor Collection characterized by beautiful, warm natural colours, organic forms and especially the sustainable rattan material. This combination brings the natural relaxation of the outdoor space into the living room, around the dining table and into the many other living spaces at home.

For more than 30 years, Cane-line has designed and produced comfortable high-end furniture with the longest possible lifetime - thanks to the beautiful and timeless design and the exclusive choice of materials of the highest quality.

Sustainability has been on Cane-line's agenda for many years, and we believe that the most sustainable perspective is to choose furniture of timeless design and high quality materials. Furniture like this can pass on from generation to generation. Cane-line furniture is an investment for life and also in the environment.

Our well-known DNA "life made comfortable" is thought into every product. In all stages of our working process, we always ensure that our furniture is made with the greatest care for our environment and the well-being of people.

We are pleased to welcome you to the Cane-line indoor universe and we hope you will enjoy the collection.

**Brian Djernes**

CEO, Cane-line A/S

A handwritten signature in black ink, appearing to read 'Brian Djernes', is positioned below the text. The signature is stylized and fluid.

# Because we care

## We are socially responsible

Cane-line products are manufactured with the greatest care for our environment and the well-being of people. We believe that responsibility goes beyond the design and production of furniture. Our production is committed to a healthy environmental policy and an ongoing focus on improving working conditions in the countries in which we operate. This means among others that no child labour is allowed and that wage levels are fair and in accordance with local legislation.

In addition, we are very conscious about the consumption of resources, about recycling and the cleaning of wastewater. Cane-line is certified by ISO14001:2015 and SMETA by DNV-GL.

Our corporate conduct and activities have earned international certifications submitting us to external control on an ongoing basis. This is your guarantee that we are committed to safeguarding people and the environment.

## Comfort is our core value

Our core value is comfort in all aspects of our furniture. We have used countless hours developing and choosing the right designs, technology and materials. Comfort for us is how well you sit or lay, the functionality, the smooth finish and the low maintenance. Our mission "life made comfortable" is total comfort for you.



The UN Global Compact is a strategic policy initiative for businesses that are committed to aligning their operations and strategies with ten universally accepted principles.



This printed matter is carbon compensated according to ClimatePartner. Offsets purchased from: South Pole Carbon. Cert. no. CC-000033/DK



Cane-line teak is approved and forested under the SVLK – Sistem Verifikasi Legalitas Kayu (Indonesia's timber legality assurance system) certification system.



Cane-line is certified by the international certification DNV-GL (Det Norske Veritas): ISO14001:2015. Cane-line is audited by DNV-GL (Det Norske Veritas): SMETA (Sedex Members Ethical Trade Audit). SMETA is the worlds most commonly used ethical audit format.



# Content

## Lounge 11

It is time to relax

---

Nest 12 / Sense 18 / Peacock 22 / Moments 24 / Curve 26 / Sidd 28

## Dining 30

Gather your loved ones around the table

---

Peacock 32 / Blend 36 / Peak 40 / Noble 44 / Sidd 46 / Cut 50 / Pure 52

## Accessories 54

The details add the atmosphere

---

Roll 56 / Box 58 / Climb 60 / Sweep 61 / Carry me 62 / Frame 64  
Area 65 / On-the-move 66 / Wave 68 / Twist 69 / Divine 70 / Cube 71  
Loop 72 / Nest 73 / Lighttube 74 / Lighthouse 75 / Scatter cushions 76  
Carpets 78 / Furniture cushion fabric 79

## Technical information 80

## Index 82



# Meet our designers

Cane-line works with leading Danish designers. They all share deep roots in the Danish design tradition built on craftsmanship, quality and distinctive expression. They also share an understanding of our Cane-line vision “life made comfortable”, which is integrated in every design.



## Foersom & Hiort-Lorenzen MDD

Johannes Foersom and Peter Hiort-Lorenzen (MDD) are two of Scandinavia's most renowned and successful furniture designers. Their goal is to create long-lasting value, and to stimulate a healthy development for people and their surroundings. They strive towards the highest quality in cooperation, process and product, and believe that knowledge and innovation are fundamental. The impressive use of exibility makes the furniture appear as small architectonic wonders.



## Strand+Hvass

Christina Strand (MDD) and Niels Hvass (MAA) are part of the new generation of Scandinavian designers. They believe that design itself is a strategy that can improve the conditions of human life, the environment and personal experiences. Additionally, they believe that design can be used as a tool to develop the competitive power and economic growth of society. Their design is usercentered and deeply rooted in the Scandinavian culture. Simplicity and well-balanced lines are the cornerstones of their work.



## Welling/Ludvik

The design duo Welling/Ludvik, Hee Welling and Gudmundur Ludvik, are contributing to the renewal of environmentally friendly design centered around personal experience. They are defined by a pure aesthetic, stripping away excess and letting each detail serve a functional purpose. They aim to achieve the best possible solution as seen from a number of perspectives. Comfort, materials, construction, pricing and environment are all defining factors in their approach to design.





## byKATO

ByKATO, Karl Rüdiger Rossell and Tonny Glismand, are dedicated to create contemporary, highly usable products for everyday living. They aim to bridge the gap between commercial, industrial design and high-quality craftsmanship by using honest and justifiable materials and paying careful attention to the smallest detail. Their mantra is to design products, which they would like to have themselves so they always take starting point in their own needs. In this way, it all comes from the heart and the required enthusiasm is always present.



## Maria Berntsen

At the start of a new project, Maria is looking for an idea with nerve, functionality and identity. Good design communicates and establishes a dialogue with the receiver. Design is not just about functionality – it is as much about the emotional connection and impact. For Maria, success is when her design brings joy in the everyday life of people. “Working with Cane-line is a great pleasure, due to their immense focus on high quality, long lifetime, and creating the best possible products for people.”



## Cane-line design team

At Cane-line, the core value for good design is comfort and we believe in the optimal mix between aesthetics and functionality. Our own internal design team is working every day with this in top of mind to create an optimal collection with unique products adding value to your life and making your life more comfortable. Cane-line design team is also working closely with our external designers.

# Lounge

**It is time to relax**

The collection is the essence of light simplicity.  
Your home is where the heart is and your home shows  
the gallery of your life.



# Nest

Design by Foersom & Hiort-Lorenzen MDD

Nest is a combination of a classic and modern look made with craftsmanship and having comfort as the focal point. The design facilitates style and ambience wherever the lounge furniture is included. The series comes in both an indoor and an outdoor version. The indoor version is bent in the beautiful natural rattan and comes with many different possibilities of cushions.

*Featured: Nest lounge chair / Nest 2-seater sofa / Nest round chair / Wave coffee table / Circle carpet*







# Nest

Design by Foersom & Hiort-Lorenzen MDD

Nest is a combination of a classic and modern look made with craftsmanship and having comfort as the focal point. The design facilitates style and ambience wherever the lounge furniture is included. The series comes in both an indoor and an outdoor version. The indoor version is bent in the beautiful natural rattan and comes with many different possibilities of cushions.

*Featured: Nest 2-seater sofa / Nest round chair / Twist coffee table / Circle carpet*



# Nest

Design by Foersom & Hiort-Lorenzen MDD

Nest is a combination of a classic and modern look made with craftsmanship and having comfort as the focal point. The design facilitates style and ambience wherever the lounge furniture is included. The series comes in both an indoor and an outdoor version. The indoor version is bent in the beautiful natural rattan and comes with many different possibilities of cushions.

*Featured: Nest lounge chair / Nest 2-seater sofa / Nest round chair / Wave coffee table / Circle carpet / Area table/stool*







# Sense

Design by Foersom & Hiort-Lorenzen MDD

Sense is an elegant and sculptural series that fits in most contemporary homes. The designs are made in the sustainable rattan material that gives the furniture a natural and sculptural look. The series consists of a 3-seater sofa and a lounge chair. The Scandinavian design and transparent back on each piece in the series make Sense furniture unique and beautiful to look at from all angles.

*Featured: Sense 3-seater sofa / Sense lounge chair / Area table/stool / Sweep basket / Circle carpet*







# Sense

Design by Foersom & Hiort-Lorenzen MDD

Sense is an elegant and sculptural series that fits in most contemporary homes. The designs are made in the sustainable rattan material that gives the furniture a natural and sculptural look. The series consists of a 3-seater sofa and a lounge chair. The Scandinavian design and transparent back on each piece in the series make Sense furniture unique and beautiful to look at from all angles.

*Featured: Sense 3-seater sofa*



# Peacock

Design by Foersom & Hiort-Lorenzen MDD

The roomy lounge chair is made of the solid Cane-line Soft Rope and comes with a characteristic black leather cushion. The contrast between the soft Cane-line Soft Rope and the raw leather cushions gives the lounge chair a visual look that fits perfectly into the modern home. Peacock comes with teak legs in natural teak or black painted.

*Featured: Peacock lounge chair*









# Moments

Design by Foersom & Hiort-Lorenzen MDD

Moments is the essence of Scandinavian, minimalist design with a high level of comfort. The series is designed to be beautiful from every angle with its light, elegant and transparent look. The indoor version of Moments is made in Cane-line Soft Rope with different possibilities of cushions.

*Featured: Moments 3-seater sofa / Moments lounge chair / On-the-move side table*





# Curve

Design by Foersom & Hiort-Lorenzen MDD

Curve is a beautiful rattan lounge chair. A lightweight yet very strong chair. The chair has a sculptural shape and a unique, excellent comfort. The chair is hand-made using the sustainable rattan materials which are bend in organic shapes. Curve comes in three different variants.

*Featured: Curve lounge chair*



# Sidd

Design by Foersom & Hiort-Lorenzen MDD

Sidd lounge chair has a timeless look and an outstanding comfort. The contrast in the choice of materials gives Sidd a very unique and raw look. Sidd is build on a steel frame and is available in brown and white Cane-line Rope.

*Featured: Sidd lounge chair / Lighthouse lantern*





# Dining

**Gather your loved ones around the table**

The collection is a mix of materials, sculptural expressions and versatility that capture modern design.



# Peacock

Design by Foersom & Hiort-Lorenzen MDD

The unique shape of Peacock gives the chair a visual beautiful design with a comfortable fit. The dining chair comes with characteristic black leather cushions that give the chair a luxurious and modern look.

Peacock is made of the durable Cane-line Soft Rope and comes with teak legs in natural teak or black painted.

*Featured: Peacock chair / Pure table / Club tray / Lighthouse lantern / Cut bar chair / Lightbox*







# Peacock

Design by Foersom & Hiort-Lorenzen MDD

The unique shape of Peacock gives the chair a visual beautiful design with a comfortable fit. The dining chair comes with characteristic black leather cushions that give the chair a luxurious and modern look.

Peacock is made of the durable Cane-line Soft Rope and comes with teak legs in natural teak or black painted.

*Featured: Peacock chair / Pure table / Club tray / Lighthouse lantern*







# Blend

Design by Foersom & Hiort-Lorenzen MDD

An elegant and comfortable rattan chair, which adds warmth and character to any interior. The chair blends in with any type of interior style and can be used as both a dining and a desk chair, or even as a classic yet contemporary side chair, adding a natural touch to your decor. The Blend chair is designed by Foersom & Hiort-Lorenzen MDD with the greatest respect for nature and by traditional craftsmanship.

*Featured: Blend chair / Pure table*





# Blend

**Design by Foersom & Hiort-Lorenzen MDD**

An elegant and comfortable rattan chair, which adds warmth and character to any interior. The chair blends in with any type of interior style and can be used as both a dining and a desk chair, or even as a classic yet contemporary side chair, adding a natural touch to your decor. The Blend chair is designed by Foersom & Hiort-Lorenzen MDD with the greatest respect for nature and by traditional craftsmanship.







# Peak

Design by Foersom & Hiort-Lorenzen MDD

Peak is designed with a great respect for the nature and traditional craftsmanship. Peak is made of the sustainable material rattan, which gives the chair an organic look. Rattan is a flexible and solid material, which can be shaped in any form. The design is simple because you see the raw material which makes every chair unique.

*Featured: Peak chair / Turn table / Clover carpet*

# Peak

Design by Foersom & Hiort-Lorenzen MDD

Peak is designed with a great respect for the nature and traditional craftsmanship. Peak is made of the sustainable material rattan, which gives the chair an organic look. Rattan is a flexible and solid material, which can be shaped in any form. The design is simple because you see the raw material which makes every chair unique.

*Featured: Peak armchair / Turn table*







# Noble

Design by ByKATO

Noble is an aesthetically beautiful chair made in colored rattan and Cane-line Rope. Noble is designed with a focus on the traditional craftsmanship, which is reflected in the beautifully woven seat and the soft lines of the frame.

An elegant and comfortable rattan chair with character. Noble can be used both as a dining chair, as a distinctive chair for the desk or simply as a modern and classic piece of furniture that adds a sculptural element to your decor.

*Featured: Noble armchair / Pure table*



# Sidd

Design by Foersom & Hiort-Lorenzen MDD

Sidd is based on a light and strong but simple steel frame, which in combination with the strong Cane-line Rope fiber contributes to a perfect design. The Sidd dining chair comes in two variants - with or without an armrest. The armrest in rattan makes the chair more raw in its expression. Sidd dining chair is available in white and brown Cane-line Rope.

*Featured: Sidd chair / Turn table / Roll bar trolley / Lightbox lantern*









# Sidd

Design by Foersom & Hiort-Lorenzen MDD

Sidd is based on a light and strong but simple steel frame, which in combination with the strong Cane-line Rope fiber contributes to a perfect design. The Sidd dining chair comes in two variants - with or without an armrest. The armrest in rattan makes the chair more raw in its expression. Sidd dining chair is available in white and brown Cane-line Rope.

*Featured: Sidd armchair / Turn table / Clover carpet*



# Cut

**Design by Welling/Ludvik**

Cut bar chair brings a very contemporary look to the modern home with its simple and minimalist design. Cut is made in aluminium which gives the chair a very lightweight expression. Cut comes in two colours – white and black - and fits in and stands out when being mixed with various interior or exterior styles.





# Pure

**Design by Foersom & Hiort-Lorenzen MDD**

Pure expresses Scandinavian design clearly through its minimalist and elegant lines. Pure consists of a solid aluminium frame that is a balanced contrast to the edgy tabletop of linoleum with a "soft" look. The combination gives a solid and durable table. A minimalist and elegant table with a design, which fits perfectly with any dining chair.

*Featured: Pure table / Noble chair / Lighthouse lantern*

# Accessories

**The details add the atmosphere**

The collection adds the finishing touch to your living spaces.  
Style as you like.



# Roll bar trolley

Design by Welling/Ludvik





# Roll trolley

Design by Welling/Ludvik



# Box wall

Design by Cane-line design team



# Box storage

Design by Cane-line design team



# Climb ladder

Design by Cane-line design team



# Sweep basket

Design by Foersom & Hiort-Lorenzen MDD



# Carry Me basket, high

Design by Maria Berntsen



# Carry Me basket, low

Design by Maria Berntsen



# Frame shelves

Design by Cane-line design team





# Area side table/footstool

Design by Welling/Ludvik



# On-the-move side table

Design by Strand+Hvass





# Wave coffee table

Design by Foersom & Hiort-Lorenzen MDD



# Twist coffee table

Design by byKATO



# Divine footstool

Design by Cane-line design team



# Cube footstool

Design by Cane-line design team



# Loop footstool

Design by Foersom & Hiort-Lorenzen MDD





# Nest footstool

Design by Foersom & Hiort-Lorenzen MDD



# Lighttube lantern

Design by Welling/Ludvik



# Lighthouse lantern

Design by Cane-line design team





**Limit**  
 Y87  
 Dark blue

**Wove**  
 Y115  
 Dark grey

**Wove**  
 Y116  
 Light brown

**Wove**  
 Y120  
 Yellow

**Wove**  
 Y121  
 Orange

**Wove**  
 Y111  
 Dark green

**Wove**  
 Y110  
 Light green

**Wove**  
 Y113  
 Dark bordeaux

**Wove**  
 Y112  
 Light bordeaux



**Link**  
 Y107  
 Blue

**Link**  
 Y109  
 Turquoise

**Link**  
 Y105  
 Light grey

**Link**  
 Y104  
 White grey

**Link**  
 Y101  
 Dark green

**Link**  
 Y100  
 Light green

**Link**  
 Y103  
 Dark bordeaux

**Link**  
 Y102  
 Light bordeaux

**Link**  
 Y108  
 Dusty rose



**Divine**  
 Y56  
 Dark green

**Divine**  
 Y50  
 Olive green

**Divine**  
 Y57  
 Midnight blue

**Divine**  
 Y52  
 Turquoise

**Divine**  
 Y55  
 Grey

**Stripe**  
 Y27  
 Multi blue

**Stripe**  
 Y26  
 Multi pink

**Dot**  
 Y87  
 Blue print

# Scatter cushions & plaids

## Wove / Fabric of Selected PP



50x50cm 19.7x19.7"

- 5240Y110 / Light green
- 5240Y111 / Dark green
- 5240Y112 / Light bordeaux
- 5240Y113 / Dark bordeaux
- 5240Y115 / Dark grey
- 5240Y116 / Light brown
- 5240Y120 / Yellow
- 5240Y121 / Orange



52x32cm 20.5x12.6"

- 5290Y110 / Light green
- 5290Y111 / Dark green
- 5290Y112 / Light bordeaux
- 5290Y113 / Dark bordeaux
- 5290Y115 / Dark grey
- 5290Y116 / Light brown
- 5290Y120 / Yellow
- 5290Y121 / Orange

## Divine / Fabric of Selected PP hand crochet



50x50cm 19.7x19.7"

- 5240Y50 / Olive green
- 5240Y52 / Turquoise
- 5240Y55 / Grey
- 5240Y56 / Dark green
- 5240Y57 / Midnight blue



52x32cm 20.5x12.6"

- 5290Y52 / Turquoise
- 5290Y55 / Grey
- 5290Y57 / Midnight blue

## Stripe / Fabric of Selected PP



50x50cm 19.7x19.7"

- 5240Y26 / Multi pink
- 5240Y27 / Multi blue



52x32cm 20.5x12.6"

- 5290Y26 / Multi pink
- 5260Y27 / Multi blue

## Dot / Fabric of Selected PP



50x50cm 19.7x19.7"

- 5240Y87 / Blue print



52x32cm 20.5x12.6"

- 5290Y87 / Blue print

## Link / Fabric of Selected PP



60x60cm 23.6x23.6"

- 5260Y104 / White grey
- 5260Y105 / Light grey



50x50cm 19.7x19.7"

- 5240Y100 / Light green
- 5240Y101 / Dark green
- 5240Y102 / Light bordeaux
- 5240Y103 / Dark bordeaux
- 5240Y104 / White grey
- 5240Y105 / Light grey
- 5240Y107 / Blue
- 5240Y108 / Dusty rose
- 5240Y109 / Turquoise



52x32cm 20.5x12.6"

- 5290Y100 / Light green
- 5290Y101 / Dark green
- 5290Y102 / Light bordeaux
- 5290Y103 / Dark bordeaux
- 5290Y104 / White grey
- 5290Y105 / Light grey
- 5290Y107 / Blue
- 5290Y108 / Dusty rose
- 5290Y109 / Turquoise

## Limit / Fabric of Selected PP



50x50cm 19.7x19.7"

- 5240Y137 / Dark blue



52x32cm 20.5x12.6"

- 5290Y87 / Dark blue

## Stay warm / Knit Selected PP

- 51170X110Y744 / Dusty white
- 51170X110Y755 / Granite



## Fabric details & cleaning instructions

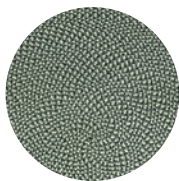
### Selected PP

- 100 % Polypropylene
- Resistant to UV rays
- Removable covers on the scatter cushions
- Covers for scatter cushions and plaids are washable at 30 °C (machine wash)
- Excellent for both indoor and outdoor use

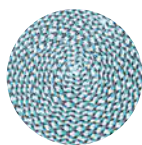
# Carpets



Defined / Fabric of Selected PP



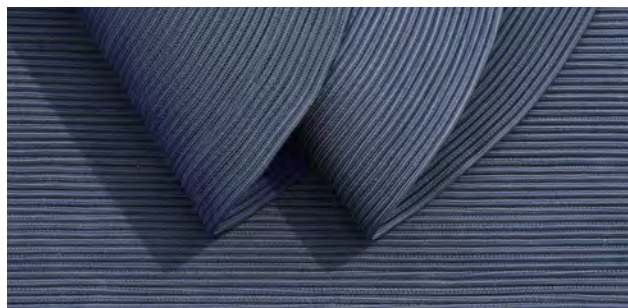
Dia. 200cm 78.7"  
 ● 71200Y60 / Turquoise  
 ● 71200Y66 / Green  
 ● 71200Y67 / Midnight blue



Dia. 140cm 55.1"  
 ● 71140Y60 / Turquoise  
 ● 71140Y66 / Green  
 ● 71140Y67 / Midnight blue



WxD: 300x200cm 118.1x78.7"  
 ● 71200X300Y65 / Dark grey  
 ● 71200X300Y67 / Midnight blue



Infinity / Fabric of Selected PP



Dia. 200cm 78.7"  
 ● 73200Y177 / Blue



WxD: 300x200cm 118.1x78.7"  
 ● 73200X300Y177 / Blue



WxD: 240x170cm 94.5x66.9"  
 ● 73170X240Y177 / Blue



Spot / Fabric of Selected PP



Dia. 180cm 70.9"  
 ● 72180Y10 / Multi color



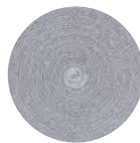
WxD: 300x200cm 118.1x78.7"  
 ● 72200X300Y10 / Multi color



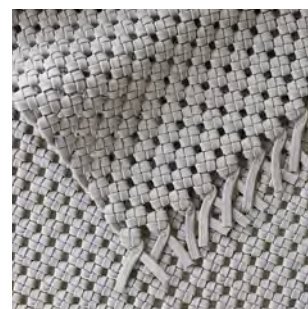
WxD: 240x170cm 94.5x66.9"  
 ● 72240X170Y10 / Multi color



Circle / Fabric of Selected PP



Dia. 140cm 55.1"  
 ● 74140ROT / Taupe  
 ● 74140ROLG / Light grey  
 ● 74140RODGD / Dark grey



Clover / Fabric of Selected PP



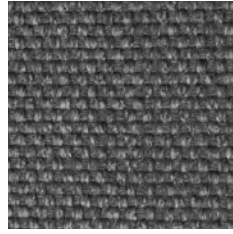
WxD: 240x170cm 94.5x66.9"  
 ● 74170X240Y134 / Sand

# Furniture cushion fabric

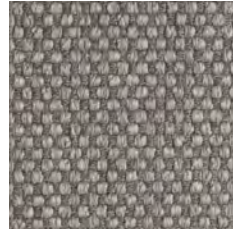
## Swipe



Y124 / Off-white



Y125 / Grey



Y126 / Light grey

## Leather



Y1006 / Cognac

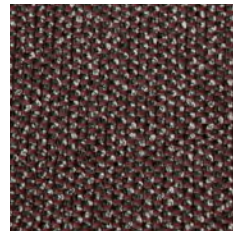


Y1008 / Black

## Selected PP



YN111 / Dark green

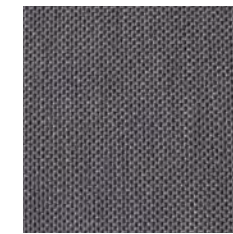


YN113 / Dark bordeaux

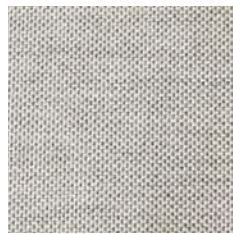
## Cane-line Natté



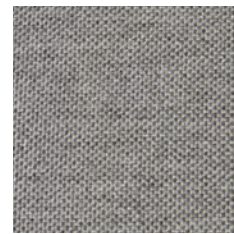
YSN94/YS94 / White



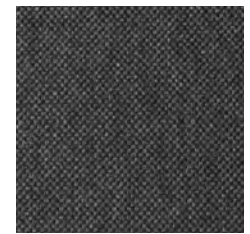
YSN95/YS95 / Grey



YSN96/YS96 / Light grey



YSN97/YS97 / Taupe



YSN98/YS98 / Black

## Fabric details & cleaning instructions

### Cane-line Swipe

- 60% cotton, 10% viscose, 10% acrylic, 10% wool, 5% nylon and 5% polyester
- Wash carefully with warm soapy water and cloth
- Fabric cover can be removed and dry cleaned
- For indoor use only

### Leather

- Cane-line leather is a slightly corrected semi-aniline leather with a soft grip
- It is stained
- We recommend to clean leather cushions regularly
- Use a leather care product
- For indoor use only

### Selected PP

- 100% Polypropylene
- Resistant to UV rays
- Removable covers on the scatter cushions
- Covers for scatter cushions and plaids are washable at 30 °C (machine wash)
- Excellent for both indoor and outdoor use

### Cane-line Natté

- 100% solution dyed acrylic fabric
- Water and stain resistant
- Resistant to UV rays
- Removable covers washable at 30 °C (machine wash)
- Air dry – upright

# Technical information

## Materials & care



### Cane-line Rope

Cane-line Rope is a combination of a woven Selected PP covering (a thermoplastic fibre) a core of Cane-line Weave<sup>®</sup>. The material is elastic and has a soft surface that acts like a fabric. Avoid pulling/pushing the elastic material too hard as this may cause it to lose its shape on the furniture. It is easy to maintain and can be cleaned with ordinary household cleaners.



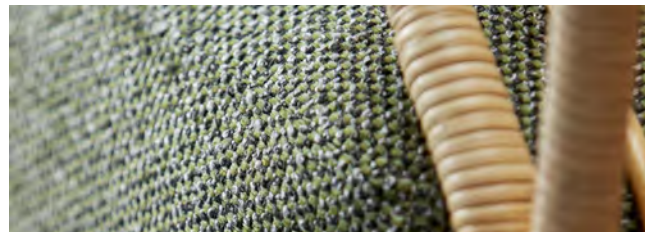
### Cane-line Natté

Cane-line Natté is a unique material produced by Sunbrella for Cane-line. Cane-line Natté combines the strength of normal all weather fabrics with the comfortable softness of the traditional Sunbrella fabrics, resulting in a soft yet durable fabric. For stubborn stains or built-up dirt, carefully wash with a recommended stain remover, such as Vanish. It is a good idea to remove the core from the cover and wash and dry them separately. Make sure to clean both sides of the outer cover. Please note, that the cushion cover is machine washable at 30 °C.



### Cane-line Teak

Cane-line teak is approved and forested under the SVLK – Sistem Verifikasi Legalitas Kayu (Indonesia's timber legality assurance system) certification system. Teak is a hardwood that is ideal for both indoor and outdoor use due to its high oil content. Our teak furniture is delivered untreated or painted. If the furniture remains untreated, the teakwood will acquire a warm patina over time and turn pale grey colour. If you wish to retain the original golden colour, we recommend treating teak furniture with a recommended teak sealant. Please note that teakwood is a natural product and therefore continues to change. This means that small cracks can develop due to drying and that slats can warp slightly.



### Selected PP

100% polypropylene (PP) and UV-resistant. In case of food or drink stains, wash the spot immediately with warm soapy water and allow the pillow to dry in an upright position. For more thorough cleaning, all pillow covers can be removed and machine-washed at 30 °C. Make sure the cover is completely dry before putting it back on the pillow. All throws are machine washable at 30 °C. For stubborn stains or built-up soil, carefully wash with a recommended stain remover, such as Vanish.



### Powder coated aluminium

All our aluminium furniture is powder coated. Powder coating serves as a protective layer that is tinted in a variety of colours. Aluminium furniture generally requires a minimum of maintenance. Vases, glass and similar items can lead to marks on the surface, if there is moisture under the item for more days. Make sure to keep the surface clean and dry, if things / items are put on the table for several days.



### Glass

All glass tops are made of toughened glass. The glass has been through a process, where it has been heated to approx. 650 degrees and then cooled. This curing of the glass makes it up to 5 times stronger than ordinary glass and less prone to cracking and breaking. The table tops require only a minimum of maintenance. Wipe it down after use with a moist microfibre cloth and mild detergent. Placing objects on the table top, such as a potted plant, can cause scratches or lime deposits. Lime deposits can be removed with a mild vinegar solution. Moving things with rough edges across the table can cause scratches that cannot be removed.





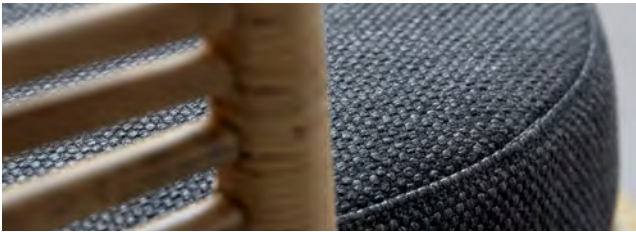
## Cane-line Soft Rope

Cane-line Soft Rope is a woven Selected PP fiber. The material has a soft surface that acts like a fabric. Avoid pulling/pushing the material too hard as this may cause it to lose its shape on the furniture. It is easy to maintain and can be cleaned with ordinary household cleaners.



## Rattan

Rattan is the rascal of the jungle. Rattan belongs to the palm family. Rattan is a climbing plant, that grows over trees and other plants in the rainforest. There are about 600 species of rattan. Cane-line uses only the best and strongest for furniture production. Cane-line ensures sustainability in relation to the environment and human relationship in a society, which has its roots deeply embedded in rattan. Rattan is only for indoor use. For cleaning and daily maintenance, use a wrung cloth. Once to twice yearly clean with white soap flakes and lukewarm water wiping off extra fluid with a dry cloth.



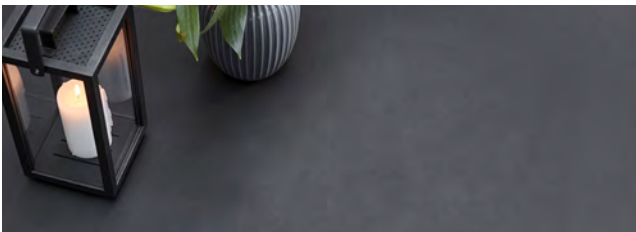
## Swipe

Swipe is an indoor fabric with a mix of 60% cotton, 10% viscose, 10% acrylic, 10% wool, 5% nylon and 5% polyester. In case of food or drink stains, wash the spot carefully and immediately with warm soapy water and allow the cushion to dry. In case of stubborn stains, the fabric cover can be removed from the cushion and dry cleaned. We would also recommend using an acknowledged cleaning detergent, such as Vanish.



## Leather

Cane-line leather is a slightly corrected semi-aniline leather with a soft grip, as well as a beautiful natural scar that gives character. The leather is chrome tanned and made without the use of PCP and CFC. All Cane-line leather is stained and for indoor use only. The colours and scarves shown on the leather are for guidance only. There may be colour or scarring differences from the displayed image to the actual skin from which the cushions are made. It is important to care for and clean leather cushions regularly, so that the leather can remain soft and maintain a comfortable sitting comfort. This also prevent the leather from fading or drying. We recommend using a leather care product.



## Linoleum

Linoleum is a natural material and consists of linseed oil, cold pressed, to which dyes and various types of fillings are added. It can be resin, lime and cork, stone or wood floor. The material is scratchproof and only for indoor use. Linoleum is a soft material that is easy to clean with a twisted cloth, and immediately wipe again with a dry cloth. Do not use dishwashing detergent, brown soap, or other ammonia-containing products. In case of stubborn stains, we recommend washing with water and soap chips, which will also leave the table with a surface that is more difficult to absorb abrasion. We recommend using coasters when applying hot pots and bowls on the material.



## Rattan Peel

Peeled bark from rattan. Sustainable material, dyed using a special technique to emphasize its natural look. Very lightweight and durable. For cleaning and daily maintenance use a wrung cloth. A solution of white soap flakes and lukewarm water should be applied once to twice yearly to maintain the natural flexibility.

# Index

The product details you are looking for



### Area table/stool

Design by Welling/Ludvik



Item numbers: 11009TAL/11009TAW  
Materials: Teak/Aluminium  
Dimensions: Ø: 40cm 15.8" H: 46,5cm 18.4"

### Blend chair

Design by Foersom & Hiort-Lorenzen MDD



Item numbers: 7430RU/7430RS  
Material: Rattan  
Dimensions: W: 54cm 21.3" D: 58cm 22.9" H: 76cm 30"  
S: 45cm 17.4" A: 72cm 28.4"

### Box storage

Design by Cane-line design team



Item numbers: 5780TAL/5780TAW  
Materials: Teak/Aluminium  
Dimensions: W: 30cm 11.9" D: 35,5cm 14" H: 25,5cm 10.1"

### Box wall

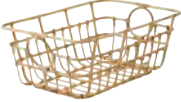
Design by Cane-line design team



Item numbers: 5770TAL/5770TAW/5770TAA  
Materials: Teak/Aluminium  
Dimensions: W: 35cm 13.7" D: 26,5cm 10.4" H: 30cm 11.8"

### Carry Me basket, low

Design by Maria Berntsen



Item number: 6612RU  
Material: Rattan  
Dimensions: W: 65cm 25.6" D: 45cm 17.8" H: 26cm 10.3"

### Carry Me basket, high

Design by Maria Berntsen



Item number: 6610RU  
Material: Rattan  
Dimensions: Ø: 47cm 18.6" H: 66cm 26"

### Casima chair

Design by Cane-line design team



Item number: 7415ES  
Material: Rattan peel  
Dimensions: W: 52cm 20.5" D: 59cm 23.3" H: 92cm 36.3"  
S: 45cm 17.8"

### Circle carpet

Design by Cane-line design team



Item numbers: 74140ROLDG/74140RODGG/74140ROT  
Material: Cane-line Soft Rope  
Dimension: Ø: 140cm 55.2"

### Climb ladder

Design by Cane-line design team



Item number: 7130RU  
Material: Rattan  
Dimensions: W: 50cm 19.7" D: 4cm 1.6" H: 189cm 74.5"

### Clover carpet

Design by Cane-line design team



Item number: 74170X240Y134  
Material: Selected PP  
Dimensions: W: 240cm 94.5" D: 170cm 67"

### Club tray

Design by Cane-line design team



Item number: 5775AS  
Material: Aluminium  
Dimensions: Ø: 44cm 17.4" H: 4,5cm 1.8"

### Club tray

Design by Cane-line design team



Item number: 5776AS  
Material: Aluminium  
Dimensions: W: 58,5cm 23.1" D: 58,5cm 23.1" H: 4,5cm 1.8"

### Copenhagen city rack

Design by Strand+Hvass



Item numbers: 11730TAL/11730TAW  
Materials: Teak/Aluminium  
Dimensions: W: 52cm 20.5" D: 32cm 12.6" H: 34cm 13.4"

### Copenhagen rack

Design by Strand+Hvass



Item number: 11720AW  
Material: Aluminium  
Dimensions: W: 115cm 45.3" D: 20,5cm 8.1" H: 31cm 12.3"

### Cube footstool

Design by Cane-line design team



Item numbers: 8340ROLDG/8340RODGG/8340ROT  
Material: Cane-line Soft Rope  
Dimensions: W: 48cm 18.9" D: 48cm 18.9" H: 39cm 15.4"

### Curve lounge chair

Design by Foersom & Hiort-Lorenzen MDD



Item numbers: 7402RUU/7402RSS/7402RUS  
Material: Rattan  
Dimensions: W: 65cm 25.6" D: 78cm 30.8" H: 71cm 28"  
S: 34cm 13.4" A: 52cm 20.3"

### Cut bar table

Design by Welling/Ludvik



Item numbers: 11501AS/11501AW  
Material: Aluminium  
Dimensions: W: 120cm 47.3" D: 60cm 23.7" H: 105cm 41.4"

### Cut bar stool

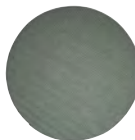
Design by Welling/Ludvik



Item numbers: 11402AS/11402AW  
Material: Aluminium  
Dimensions: W: 43cm 17" D: 34cm 13.4" H: 76cm 30"

### Defined carpet

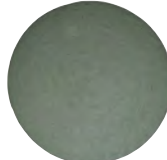
Design by Cane-line design team



Item numbers: 71140Y60/71140Y66/71140Y67  
Material: Selected PP  
Dimension: Ø: 140cm 55.2"

### Defined carpet

Design by Cane-line design team



Item numbers: 71200Y60/71200Y66/71200Y67  
Material: Selected PP  
Dimension: Ø: 200cm 78.8"

### Defined carpet

Design by Cane-line design team



Item number: 71200X300Y65  
Material: Selected PP  
Dimensions: W: 300cm 118.2" D: 200cm 78.8"

### Divine footstool

Design by Cane-line design team



Item numbers: 8320Y50/8320Y52/8320Y55/8320Y56/  
8320Y57  
Material: Selected PP  
Dimensions: W: 55cm 21.7" D: 55cm 21.7" H: 35cm 13.8"

### Frame shelving system, low

Design by Cane-line design team



Item numbers: 5789TAL/5789TAW  
Materials: Teak/Aluminium  
Dimensions: W: 100cm 39.4" D: 42cm 16.6" H: 64cm 25.2"

### Frame shelving system, high

Design by Cane-line design team



Item numbers: 5790TAL/5790TAW  
Materials: Teak/Aluminium  
Dimensions: W: 100cm 39.4" D: 42cm 16.6" H: 84cm 33.1"

### Frame shelving system, complete

Design by Cane-line design team



Item numbers: 5799TAL/5799TAW  
Materials: Teak/Aluminium  
Dimensions: W: 100cm 39.4" D: 42cm 16.6" H: 204cm 80.4"

### Frame trolley

Design by Cane-line design team



Item number: 5170TAL  
Materials: Teak/Aluminium  
Dimensions: W: 115cm 45.3" D: 48cm 18.9" H: 82cm 32.3"

### Infinity carpet

Design by Cane-line design team



Item numbers: 73140Y177/ 73140Y176  
Material: Selected PP  
Dimension: Ø: 140cm 55.2"

### Infinity carpet

Design by Cane-line design team



Item number: 73200Y177  
Material: Selected PP  
Dimension: Ø: 200cm 78.8"

### Infinity carpet

Design by Cane-line design team



Item number: 73170X240Y177  
Material: Selected PP  
Dimensions: W: 240cm 94.5" D: 170cm 67"

### Infinity carpet

Design by Cane-line design team



Item number: 73200X300Y177  
Material: Selected PP  
Dimensions: W: 300cm 118.2" D: 200cm 78.8"

### Lightbox, small

Design by Cane-line design team



Item number: 5721AL  
Materials: Aluminium/Glass  
Dimensions: W: 23cm 9.1" D: 23cm 9.1" H: 22cm 8.7"

### Lightbox, rectangular

Design by Cane-line design team



Item number: 5723AL  
Materials: Aluminium/Glass  
Dimensions: W: 46cm 18.2" D: 23cm 9.1" H: 22cm 8.7"

### Lighthouse, x-small

Design by Cane-line design team



Item number: 5720AL  
Materials: Aluminium/Glass  
Dimensions: W: 15,5cm 6.2" D: 16,5cm 6.5" H: 37cm 14.6"

### Lighthouse, small

Design by Cane-line design team



Item numbers: 5724AL/5724ADG/5724AT  
Materials: Aluminium/Glass  
Dimensions: W: 23cm 9.1" D: 23cm 9.1" H: 42cm 16.6"

### Lighthouse, small

Design by Cane-line design team



Item numbers: 5724TAL/ 5724TAW  
Materials: Teak/Aluminium/Glass  
Dimensions: W: 23cm 9.1" D: 23cm 9.1" H: 42cm 16.6"

### Lighthouse, large

Design by Cane-line design team



Item number: 5725AL  
Materials: Aluminium/Glass  
Dimensions: W: 33cm 13" D: 33cm 13" H: 54cm 21.3"

### Lighthouse, large

Design by Cane-line design team



Item numbers: 5725TAL/5725TAW  
Materials: Teak/Aluminium/Glass  
Dimensions: W: 33cm 13" D: 33cm 13" H: 54cm 21.3"

### Lighthouse, rectangular

Design by Cane-line design team



Item number: 5726AL  
Materials: Aluminium/Glass  
Dimensions: W: 46cm 18.2" D: 23cm 9.1" H: 42cm 16.6"

### Lighthouse, rectangular

Design by Cane-line design team



Item numbers: 5726TAL/5726TAW  
Materials: Teak/Aluminium/Glass  
Dimensions: W: 46cm 18.2" D: 23cm 9.1" H: 42cm 16.6"

### Lighttube, small

Design by Welling/Ludvik



Item number: 5740AL  
Materials: Aluminium/Acrylic plexiglass  
Dimensions: Ø: 22cm 8.7" H: 42cm 16.6"

### Lighttube, large

Design by Welling/Ludvik



Item number: 5741AL

Materials: Aluminium/Acrylic plexiglass  
Dimensions: Ø: 30cm 11.9" H: 64cm 25.2"

### Loop footstool

Design by Foersom & Hiort-Lorenzen MDD



Item numbers: 7330RU/7330RS

Material: Rattan  
Dimensions: Ø: 74cm 29.2" H: 37cm 14.6"

### Moments 3-seater sofa

Design by Foersom & Hiort-Lorenzen MDD



Item number: F7543ROG

Material: Cane-line Soft Rope  
Dimensions: W: 220cm 86.7" D: 89cm 35.1" H: 80cm 31.5"  
S: 43cm 17" A: 72cm 28.4"

### Moments lounge chair

Design by Foersom & Hiort-Lorenzen MDD



Item number: F7443ROG

Material: Cane-line Soft Rope  
Dimensions: W: 78,5cm 31" D: 85cm 33.5" H: 72,5cm 28.6"  
S: 43cm 17" A: 60cm 23.7"

### Nest 2-seater sofa

Design by Foersom & Hiort-Lorenzen MDD



Item number: 7522RU

Material: Rattan  
Dimensions: W: 156cm 61.5" D: 80cm 31.5" H: 72cm 28.4"  
S: 40cm 15.8" A: 72cm 28.4"

### Nest lounge chair

Design by Foersom & Hiort-Lorenzen MDD



Item number: 7421RU

Material: Rattan  
Dimensions: W: 90cm 35.5" D: 71cm 28" H: 72cm 28.4"  
S: 40cm 15.8" A: 72cm 28.4"

### Nest round chair

Design by Foersom & Hiort-Lorenzen MDD



Item number: 7422RU

Material: Rattan  
Dimensions: W: 88cm 34.7" D: 80cm 31.5" H: 68cm 26.8"  
S: 38cm 15.8" A: 56cm 22.1"

### Nest footstool, small

Design by Foersom & Hiort-Lorenzen MDD



Item number: 7320RU

Material: Rattan  
Dimensions: Ø: 65cm 25.6" H: 65cm 25.6"

### Nest footstool, large

Design by Foersom & Hiort-Lorenzen MDD



Item number: 7321RU

Material: Rattan  
Dimensions: Ø: 130cm 51.2" H: 40cm 15.8"

### Noble chair

Design by byKATO



Item number: 7438RRSG

Materials: Rattan/Cane-line Soft Rope  
Dimensions: W: 62cm 24.5" D: 58cm 22.9" H: 76cm 30"  
S: 47cm 18.6" A: 71cm 28"

### On-the-move side table, x-small

Design by Strand+Hvass



Item numbers: 5062AS/5062AI/5062AW

Material: Aluminium  
Dimensions: Ø: 37cm 14.6" H: 46,5cm 18.3"

### On-the-move side table, small

Design by Strand+Hvass



Item numbers: 5065AA/5065AB/5065AC/5065AD/5065ADG/5065AI/5065AMO/5065ABR/5065ADR/5065AS/5065AT/5065AW/5065AY

Material: Aluminium  
Dimensions: Ø: 44cm 17.4" H: 54cm 21.3"

### On-the-move side table, large

Design by Strand+Hvass



Item numbers: 5066AI/5066AS/5066AT/5066AW

Material: Aluminium  
Dimensions: Ø: 52cm 20.5" H: 60cm 23.7"

### Peacock lounge chair

Design by Foersom & Hiort-Lorenzen MDD



Item numbers: 7458RODGST/5458RODGT

Materials: Teak/Cane-line Soft Rope  
Dimensions: W: 91cm 35.8" D: 93cm 36.6" H: 87cm 34.2"  
S: 37cm 14.6"

### Peacock chair

Design by Foersom & Hiort-Lorenzen MDD



Item numbers: 7454RODGST/5454RODGT

Materials: Teak/Cane-line Soft Rope  
Dimensions: W: 61cm 24" D: 61cm 24" H: 81cm 31.8"  
S: 47cm 18.6"

### Peak armchair

Design by Foersom & Hiort-Lorenzen MDD



Item number: 7451RU

Material: Rattan  
Dimensions: W: 57cm 21.7" D: 57cm 21.7" H: 78cm 31.7"  
S: 46cm 18.4" A: 66cm 26.2"

### Peak chair

Design by Foersom & Hiort-Lorenzen MDD



Item number: 7450RU

Material: Rattan  
Dimensions: W: 52cm 19.3" D: 57cm 24.3" H: 78cm 31.7"  
S: 46cm 18.4"

### Pure table

Design by Foersom & Hiort-Lorenzen MDD



Item number: 5085AL/5085AI + P200X100LS

Material: Aluminium + Linoleum  
Table base: W: 200cm 78.8" D: 100cm 39.4" H: 73cm 28.8"  
Table top: W: 200cm 78.8" D: 100cm 39.4" H: 2cm 0.8"

### Pure table

Design by Foersom & Hiort-Lorenzen MDD



Item number: 5086AL + P280X100LS

Material: Aluminium + Linoleum  
Table base: W: 280cm 110.1" D: 100cm 39.4" H: 73cm 28.8"  
Table top: W: 280cm 110.1" D: 100cm 39.4" H: 2cm 0.8"

### Roll trolley

Design by Welling/Ludvik



Item numbers: 5002AB/5002AL/5002AW

Material: Aluminium  
Dimensions: Ø: 44cm 17.4" H: 78cm 30.8"

### Roll bar trolley

Design by Welling/Ludvik



Item numbers: 5102AL/5102AW  
Materials: Aluminium/Teak  
Dimensions: W: 49cm 19.3" D: 78cm 30.8" H: 85cm 33.5"

### Savona armchair

Design by Cane-line design team



Item number: 7414ES  
Material: Rattan peel  
Dimensions: W: 59cm 23.3" D: 54cm 21.3" H: 84cm 33.1"  
S: 48cm 18.9" A: 66cm 26"

### Sense 3-seater sofa

Design by Foersom & Hiort-Lorenzen MDD



Item numbers: 7543RU/7543RS  
Material: Rattan  
Dimensions: W: 222cm 87.5" D: 90cm 35.5" H: 72cm 28.4"  
S: 40cm 15.8"

### Sense lounge chair

Design by Foersom & Hiort-Lorenzen MDD



Item numbers: 7443RU/7443RS  
Material: Rattan  
Dimensions: W: 75cm 29.6" D: 85cm 33.5" H: 75cm 29.6"  
S: 43cm 17" A: 60cm 23.7"

### Sidd lounge chair

Design by Foersom & Hiort-Lorenzen MDD



Item numbers: 7429RTB/7429RWW  
Materials: Cane-line Rope/Rattan  
Dimensions: W: 59cm 23.3" D: 68cm 26.8" H: 76cm 30"  
S: 35cm 13.8" A: 54cm 21.3"

### Sidd armchair

Design by Foersom & Hiort-Lorenzen MDD



Item numbers: 7424RTB/7424RWW  
Materials: Cane-line Rope/Rattan  
Dimensions: W: 52cm 20.5" D: 59cm 23.3" H: 80cm 31.5"  
S: 46cm 18.2" A: 65cm 25.6"

### Sidd chair

Design by Foersom & Hiort-Lorenzen MDD



Item numbers: 7423RTB/7423RWW  
Material: Cane-line Rope  
Dimensions: W: 52cm 20.5" D: 59cm 23.3" H: 80cm 31.5"  
S: 46cm 18.2"

### Soft basket, small

Design by Cane-line design team



Item number: 5123ROBB  
Material: Selected PP  
Dimensions: Ø: 40cm 15.8" H: 27cm 10.7"

### Soft basket, large

Design by Cane-line design team



Item number: 5124ROBB  
Material: Selected PP  
Dimensions: Ø: 53cm 20.9" H: 38cm 15"

### Soft basket, medium

Design by Cane-line design team



Item numbers: 5132ROLG/5132RODG/5132ROT  
Material: Cane-line Soft Rope  
Dimensions: Ø: 40cm 15.8" H: 23cm 9.1"

### Soft basket, large

Design by Cane-line design team



Item numbers: 5133ROLG/5133RODG/5133ROT  
Material: Cane-line Soft Rope  
Dimensions: Ø: 50cm 19.7" H: 34cm 13.4"

### Spin chair

Design by Foersom & Hiort-Lorenzen MDD



Item numbers: 7434SWRU/7434SSRS/7434SWRW  
Material: Rattan  
Dimensions: W: 52cm 20.5" D: 55cm 21.7" H: 74cm 29.2"  
S: 45cm 17.8" A: 70cm 27.6"

### Spot carpet

Design by Cane-line design team



Item number: 72180Y10  
Material: Selected PP  
Dimension: Ø: 180cm 70.9"

### Spot carpet

Design by Cane-line design team



Item number: 72240X170Y10  
Material: Selected PP  
Dimensions: W: 240cm 94.5" D: 170cm 67"

### Spot carpet

Design by Cane-line design team



Item number: 72200X300Y10  
Material: Selected PP  
Dimensions: W: 300cm 118.2" D: 200cm 78.8"

### Straw chaiselounge

Design by Foersom & Hiort-Lorenzen MDD



Item number: 7411FU  
Material: Flat paper yarn  
Dimensions: W: 62cm 24.5" D: 142cm 56" H: 100cm 39.4"  
S: 40cm 15.8" A: 50cm 19.7"

### Straw footstool

Design by Foersom & Hiort-Lorenzen MDD



Item numbers: 7309FU/7309FS  
Material: Flat paper yarn  
Dimensions: W: 57cm 22.5" D: 49cm 19.3" H: 36cm 14.2"

### Straw lounge chair

Design by Foersom & Hiort-Lorenzen MDD



Item numbers: 7409FU/7409FS  
Material: Flat paper yarn  
Dimensions: W: 70cm 27.6" D: 73cm 28.8" H: 72cm 28.4"  
S: 35cm 13.8" A: 51cm 20.1"

### Straw armchair

Design by Foersom & Hiort-Lorenzen MDD



Item number: 7408FS  
Material: Flat paper yarn  
Dimensions: W: 58cm 22.9" D: 64cm 25.2" H: 81cm 31.9"  
S: 45cm 17.8" A: 65cm 25.6"

### Straw chair

Design by Foersom & Hiort-Lorenzen MDD



Item number: 7407FS  
Material: Flat paper yarn  
Dimensions: W: 50cm 19.7" D: 64cm 25.2" H: 81cm 31.9"  
S: 45cm 17.8"

### Straw footstool

Design by Foersom & Hiort-Lorenzen MDD



Item numbers: 7309PU/7309PS  
Material: Round paper yarn  
Dimensions: W: 57cm 22.5" D: 49cm 19.3" H: 36cm 14.2"

### Straw lounge chair

Design by Foersom & Hiort-Lorenzen MDD



Item numbers: 7409PU/7409PS  
Material: Round paper yarn  
Dimensions: W: 70cm 27.6" D: 73cm 28.8" H: 72cm 28.4"  
S: 35cm 13.8" A: 51cm 20.1"

### Straw armchair

Design by Foersom & Hiort-Lorenzen MDD



Item number: 7408PS  
Material: Round paper yarn  
Dimensions: W: 58cm 22.9" D: 64cm 25.2" H: 81cm 31.9"  
S: 45cm 17.8" A: 65cm 25.6"

### Sweep basket, square

Design by Foersom & Hiort-Lorenzen MDD



Item number: 7120RU  
Material: Rattan  
Dimensions: W: 42cm 16.6" D: 42cm 16.6" H: 46cm 18.2"

### Sweep basket, round

Design by Foersom & Hiort-Lorenzen MDD



Item number: 7121RU  
Material: Rattan  
Dimensions: Ø: 43cm 17" H: 46cm 18.2"

### Turn table

Design by Foersom & Hiort-Lorenzen MDD



Item numbers: 5035AB/5035AW + P035BLZW  
Materials: Aluminium + Birchwood veneer  
Table base: W: 76cm 30" D: 35cm 13.8" H: 70.5cm 27.8"  
Table top: W: 180cm 70.9" D: 90cm 35.4" H: 2cm 0.8"

### Twist coffee table base, small

Design by byKATO



Item numbers: 5010AI/5010AL/5010AW  
Material: Aluminium  
Dimensions: W: 35cm 13.8" D: 35cm 13.8" H: 37cm 14.6"

### Twist coffee table top, small

Item number: P45COB  
Material: Fossil black ceramic  
Dimensions: Ø: 45cm 17.8" H: 1,2cm 0.5"

Item number: P45COG  
Material: Fossil grey ceramic  
Dimensions: Ø: 45cm 17.8" H: 1,2cm 0.5"

Item number: P45KW  
Material: Cane-line HI-Core  
Dimensions: Ø: 45cm 17.8" H: 1,2cm 0.5"

Item number: P45HPSDG  
Material: Dark grey structure  
Dimensions: Ø: 45cm 17.8" H: 1,2cm 0.5"

### Twist coffee table base, medium

Design by byKATO



Item numbers: 5011AI/5011AL/5011AW  
Material: Aluminium  
Dimensions: W: 56,5cm 22.3" D: 56,5cm 22.3" H: 41cm 16.2"

### Twist coffee table top, medium

Item number: P70COB  
Material: Fossil black ceramic  
Dimensions: Ø: 70cm 27.6" H: 1,2cm 0.5"

Item number: P70COG  
Material: Fossil grey ceramic  
Dimensions: Ø: 70cm 27.6" H: 1,2cm 0.5"

Item number: P70KW  
Material: Cane-line HI-Core  
Dimensions: Ø: 70cm 27.6" H: 1,2cm 0.5"

Item number: P70HPSDG  
Material: Dark grey structure  
Dimensions: Ø: 70cm 27.6" H: 1,2cm 0.5"

### Twist coffee table base, large

Design by byKATO



Item numbers: 5012AI/5012AL/5012AW  
Material: Aluminium  
Dimensions: W: 73,5cm 29" D: 73,5cm 29" H: 44cm 17.4"

### Twist coffee table top, large

Item number: P90COB  
Material: Fossil black ceramic  
Dimensions: Ø: 90cm 35.5" H: 1,2cm 0.5"

Item number: P90COG  
Material: Fossil grey ceramic  
Dimensions: Ø: 90cm 35.5" H: 1,2cm 0.5"

Item number: P90KW  
Material: Cane-line HI-Core  
Dimensions: Ø: 90cm 35.5" H: 1,2cm 0.5"

Item number: P90HPSDG  
Material: Dark grey structure  
Dimensions: Ø: 90cm 35.5" H: 1,2cm 0.5"

### Wave coffee table

Design by Foersom & Hiort-Lorenzen MDD



Item numbers: 7042RU/7042RS + P042GG  
Materials: Rattan + Clear safety glass  
Table base: W: 74cm 29.2" D: 65cm 25.6" H: 40cm 15.8"  
Table top: W: 96cm 37.8" D: 89cm 35.1" H: 1cm 0.4"

### Divine scatter cushion

Design by Cane-line design team



Item numbers: 5240Y50/5240Y52/5240Y55/5240Y56/  
5240Y57  
Material: Selected PP  
Dimensions: W: 50cm 19.7" D: 50cm 19.7" H: 12cm 4.8"

### Divine scatter cushion

Design by Cane-line design team



Item numbers: 5290Y52/5290Y55/5290Y57  
Material: Selected PP  
Dimensions: W: 32cm 12.6" D: 52cm 20.5" H: 12cm 4.8"

### Dot scatter cushion

Design by Cane-line design team



Item number: 5240Y87  
Material: Selected PP  
Dimensions: W: 50cm 19.7" D: 50cm 19.7" H: 12cm 4.8"

### Dot scatter cushion

Design by Cane-line design team



Item number: 5290Y87  
Material: Selected PP  
Dimensions: W: 32cm 12.6" D: 52cm 20.5" H: 12cm 4.8"

### Limit scatter cushion

Design by Cane-line design team



Item number: 5240Y137  
Material: Selected PP  
Dimensions: W: 50cm 19.7" D: 50cm 19.7" H: 12cm 4.8"

### Limit scatter cushion

Design by Cane-line design team



Item number: 5290Y137  
Material: Selected PP  
Dimensions: W: 32cm 12.6" D: 52cm 20.5" H: 12cm 4.8"

### Link scatter cushion

Design by Cane-line design team



Item numbers: 5240Y100/5240Y101/5240Y102/5240Y103/  
5240Y104/5240Y105/5240Y107/5240Y108/5240Y109  
Material: Selected PP  
Dimensions: W: 50cm 19.7" D: 50cm 19.7" H: 12cm 4.8"



### Link scatter cushion

Design by Cane-line design team



Item numbers: 5290Y100/5290Y101/5290Y102/5290Y103/  
5290Y104/5290Y105/5290Y107/5290Y108/5290Y109  
Material: Selected PP  
Dimensions: W: 32cm 12.6" D: 52cm 20.5" H: 12cm 4.8"

### Link scatter cushion

Design by Cane-line design team



Item numbers: 5260Y104/5260Y105  
Material: Selected PP  
Dimensions: W: 60cm 23.7" D: 60cm 23.7" H: 12cm 4.8"

### Stripe scatter cushion

Design by Cane-line design team



Item numbers: 5240Y26/5240Y27  
Material: Selected PP  
Dimensions: W: 50cm 19.7" D: 50cm 19.7" H: 12cm 4.8"

### Stripe scatter cushion

Design by Cane-line design team



Item numbers: 5290Y26/5290Y27  
Material: Selected PP  
Dimensions: W: 32cm 12.6" D: 52cm 20.5" H: 12cm 4.8"

### Wove scatter cushion

Design by Cane-line design team



Item numbers: 5240Y110/5240Y111/5240Y112/5240Y113/  
5240Y115/5240Y116/5240Y120/5240Y121  
Material: Selected PP  
Dimensions: W: 50cm 19.7" D: 50cm 19.7" H: 12cm 4.8"

### Wove scatter cushion

Design by Cane-line design team



Item numbers: 5290Y110/5290Y111/5290Y112/5290Y113/  
5290Y115/5290Y116/5290Y120/5290Y121  
Material: Selected PP  
Dimensions: W: 32cm 12.6" D: 52cm 20.5" H: 12cm 4.8"

### Stay warm plaid

Design by Cane-line design team



Item numbers: 51170X110Y744/ 51170X110Y755  
Material: Selected PP  
Dimensions: W: 170cm 67" D: 110cm 43.4" H: 1cm 0.4"





## Indoor collection

Cane-line is a Danish design company with more than 30 years of experience in designing and manufacturing functional and comfortable furniture.

Life made comfortable is the very essence of Cane-line. All over the world our mission is the same – to make life comfortable and add value to life and the places where you unwind and relax. We are constantly focusing on quality, innovative technologies and comfort in both products and life to ensure that our furniture is made with the greatest care for the environment and the well-being of people.

Cane-line indoor is a collection of natural materials, sculptural expressions and versatility that capture modern design. It is the essence of light simplicity and it gives you the freedom to express your individual style. Your home is where the heart is and your home shows the gallery of your life.

Keep in touch

@caneline #caneline #canelinemoments #canelineprojects



Cane-line A/S, Rynkebyvej 245, DK-5350 Rynkeby, Denmark  
E: info@cane-line.com | P: +45 66154560 | F: +45 66154651  
cane-line.com

Cane-line reserves the right to modify products and accepts no liability for any printing errors.

**Cane-line**<sup>®</sup>